

॥ २१ ॥



A I R X P R O J E C T S

Leading Supplier Of

**High Performance
Insulation System
Worldwide**



www.airx.co.in



info@airx.co.in

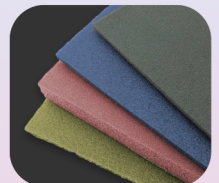
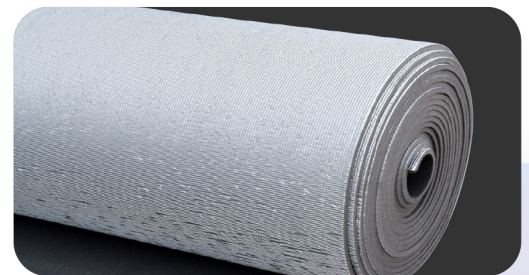
About Us

AirX is a leading supplier of high-performance insulation systems worldwide. The company is specialized in providing solutions for thermal, acoustic, thermo-acoustic, and flexible elastomeric insulation materials. Its diversified product portfolio provides cutting-edge sustainable solutions by giving the advantage of tailor-made services based on specific needs for commercial, industrial, and residential end-to-end insulation. The company has successfully delivered performance and quality-based innovative products to control energy consumption.

XLPE

XLPE Insulation specially designed for the HVAC segment and for applications in the commercial, industrial and residential industries for thermal, Under-Deck & acoustic insulation.

XLPE conforms to Class 1 for Flame Friendly Characteristics and Class 'O' for fire Propagation, it is dust-fiber-free and user-friendly. XLPE comes with Plain, Met-Pet, Alu-Foil, Alu-Pet, Aero-Clad Lamination & Self-Adhesive. It comes with FM Global Certification.



Roll Thickness : 3mm, 6mm, 9mm, 13mm, 19mm, 25mm, 32mm, 50mm.

XLPE tube available with all thicknesses & lamination with pipe diameter (Inch)

MS Pipe : 1/2", 3/4", 1", 1 1/4", 1 1/2", 2", 2 1/2", 3", 4", 5", 6", 8", 10"

Copper Pipe : 1/4", 3/8", 1/2", 5/8", 3/4", 7/8", 1", 1 1/8", 1 1/4", 1 3/8", 1 1/2", 1 5/8", 1 3/4", 1 7/8", 2", 2 1/8", 2 1/4", 2 3/8", 2 1/2", 2 5/8", 2 7/8", 3", 3 1/8", 3 1/2", 3 5/8", 3 7/8", 4 1/8", 4 1/2", 5 1/8", 5 1/2"

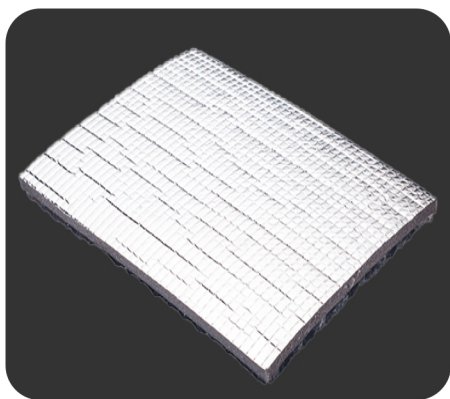
(CPVC & UPVC tube insulation is also available)

Bubble Wrap

Insulation specially designed for under deck, PEB & metal roof segment lamination with both or single side Pure Aluminum, Met-Pet & Alu-Met foil Combination. Bubble Roll Thickness: 4 mm, 10 mm in the single bubble, and 8 mm, 12 mm, and 24 mm in Double Bubble. Also available in combination with XLPE Insulation as per customized requirements.

Single Bubble Roll Thickness : 4 mm, 8 mm, 10 mm, 12 mm.

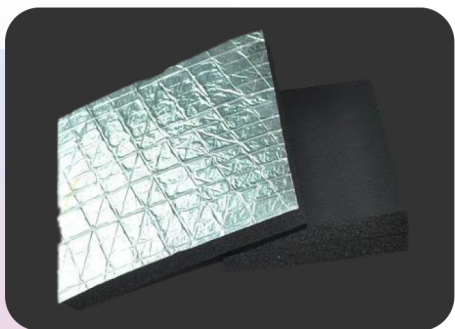
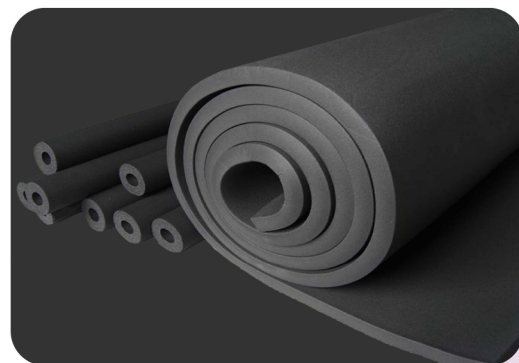
Double Bubble Roll Thickness : 8 mm, 12 mm, 24 mm.



Nitrile Rubber

Insulation specially designed for the insulation of ducts, Flat and round surfaces. Meets the different needs of insulation for industrial, commercial, and domestic segments. Available with lamination of Aluminium, Glass Fabric with different colors, Alu-Clad & Self-Adhesive. High-Performance acoustic insulation for all kinds of Noise Control Applications and also having Anti-Microbial properties.

Acoustic Thickness (mm) : 10, 15, 20, 25, 30, 40, 50.



Nitrile conforms to Class 1 for Flame Friendly Characteristics and Class 'O' for fire Propagation. It is facialized with UL-94 and FM global certification.

Roll Thickness : 6mm, 9mm, 13mm, 19mm, 25mm, 32 mm.

Nitrile tube available with all thicknesses & lamination with pipe diameter (Inch)

1/4", 5/16", 3/8", 1/2", 5/8", 3/4", 7/8", 1", 1-1/8", 1-3/8", 1-5/8", 2-1/8", 2-3/8", 2-5/8", 2-7/8", 3-1/8", 4-1/8".

Glass Wool / Fiberglass

Insulation is made from glass fibers, factory laminated with a Foil-Scrim-Kraft (FSK) vapor retarder facing or other designated foil to meet the requirement of Commercial, Industrial and Residential insulation. An innovative non-itching version is also available on request. Specially invented acoustic fiberglass insulation suits high-end acoustics applications. Acoustic tissue with white and black colors is also available.



Density (kg/m³) : 12, 16, 20, 24, 32, 40, 48.

Thickness (mm) : 12, 25, 40, 50, 65, 75.

Rockwool

Insulation products are made of basalt and volcanic stone along with non-combustible properties with a melting point of up to 1260°C. It caters to the requirement of thermal and acoustic insulation in the commercial and industrial segments.



It is Available in Rolls, Slabs, LRB Mattresses, Pipe Insulation, Tuff LAMELLA & TUFF RIGID BOARD with facing Aluminum Foil (FSK) / Aluglass (ALG).

Density (kg/m³) : 24, 48, 50, 65, 80, 100, 120, 150.

Thickness (mm) : 30, 50, 75, 100.

Adhesive

Synthetic Rubber based adhesive specially developed to cater various insulation material applications in HVAC & R industry.

Pack Size : 5 Liters, 30 Liters Drum.

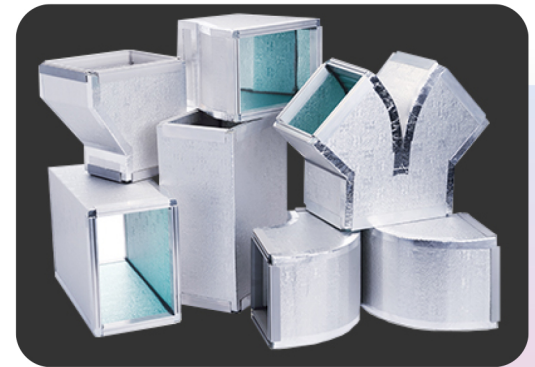


PIR Duct

Pre-Insulated panels made of an insulating component with alternative new generation blowing agents that eliminates the use of CFC, HCFC & HFC in rigid PIR foam with facings of Aluminum Foil of 80 micron on both side.

Utilization :

Pre-Insulated air duct system specially designed to be used in Hotels, Malls, Offices, Residential buildings, Supermarkets, Theaters, Airports, Industries, healthcare facilities, food processing industries, schools, pharmaceutical factories, and clean rooms.



Application :

HVAC ducting, Fall ceiling, Under deck, Over deck, Cavity Wall insulation.

Panel Thickness : 20 mm thickness with 80/80 microns embossed aluminum foil for Internal Application.
30 mm thickness with 80/200 microns embossed aluminum foil for External Application.

Panel Dimensions : 4000 MM (L) X 1200 MM (W).

Material Characteristics :

Density 45 kg/m³ ± 3,
Thermal Conductivity 0.021 W/(m0K),
Operating temperature range -30°C to +65°C,
Closed cell >95%, **Water Vapour Absorption** 0.03%,
Water Vapour Permeance 0.00 perms.

Fire Reaction : Self-extinguishing, Low fire propagation and No flaming droplets.

CLASS O & CLASS 1 : BS476 Part6 & Part7,
Class A : ASTM E84, UI723, and NFPA255,
Class B : BSEN13501-1.

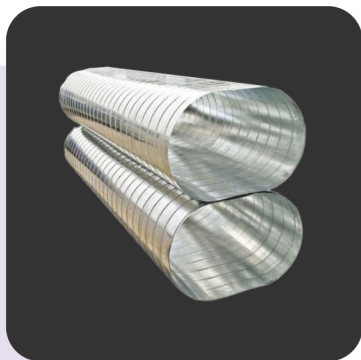
Toxic Index : below 5.5 as per British Naval Engineering Services NES713.

IMO resolutions : MSC307(88).

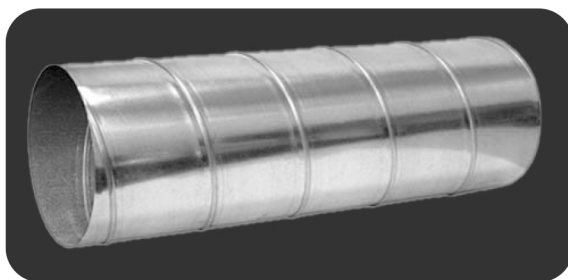
PIR Panel Application Areas : HVAC Ducting Work, Wall Partition/Cavity Insulation, False Ceiling Insulation, Under-Deck Insulation (Metal Roof/RCC Slab).

Pre-Fabricated Duct

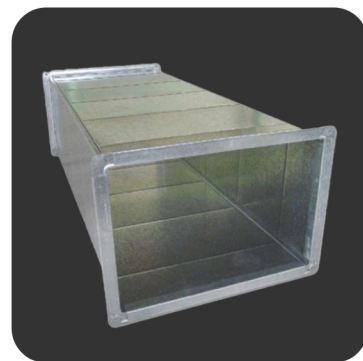
We are supplier of SPIRAL, OVAL & RECTANGULAR DUCTS & duct products in galvanized iron steel, aluminium, stainless steel, mild steel, fire rated ducting, linear acoustic insulation and aluminium cladding with an option of painting & powder coating.



Flat Oval Duct



Spiral Duct



Rectangle Duct

Industrial Fan

Axial Fan :

Tube Axial Flow Fans have MS Casing/Bracket with cast aluminum alloy Impeller with aero foil section blades suitable for various mounting. Tube Axial Flow Fan are used in industry for providing general ventilation, fumed exhaust and removal of hot spots and as roof extractor.

Axial Fan



Greenhouse Fan



FRP Exhaust Fan



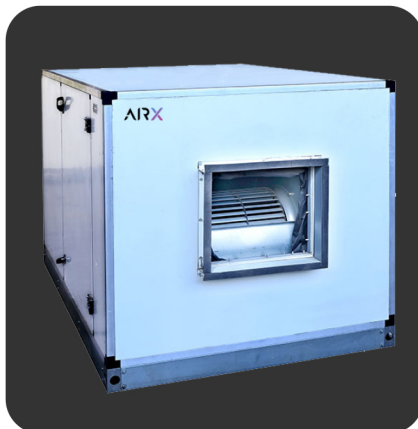
Cabinet Fan :

Cabinet is manufactured in galvanized sheet steel with a belt driven, high efficiency, DIDW forward curve, backward curved Centrifugal blower.

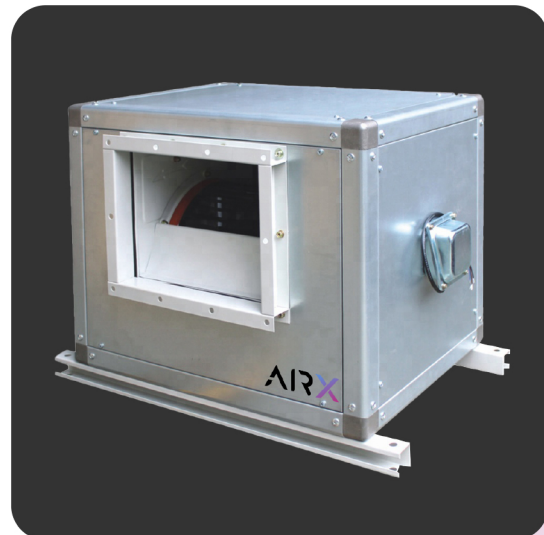
Scrubber Unit



Air Washer



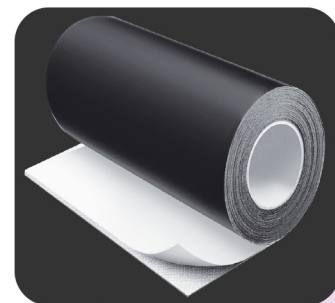
Cabinet Fan



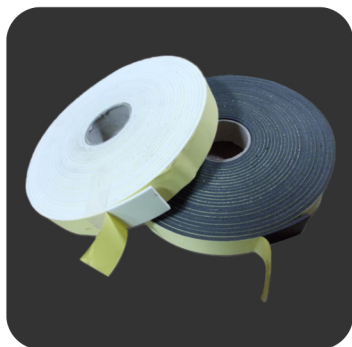
U.V. Barrier - Glass Cloth

Glass cloth tape designed to operate in applications requiring high mechanical strength and resistance to high temperatures. The glass cloth is specially treated and prepared to provide corrosion free protection. The adhesive is a rubber pressure-sensitive thermosetting system.

The glass will not shrink, rot or burn and has a high tensile strength. **Available Size :** 1 mtr (width) X 50 mtr (length) = 50 sqm.



Duct Gasket



Available Sizes :

20 mm x 3 mm = 10 mtr.
25 mm x 3 mm = 10 mtr.
30 mm x 3 mm = 10 mtr
15 mm x 6 mm = 10 mtr.

Alu Tape



Available Sizes :

48 mm x 30 mtr
(2 inch - 30 mtr/roll)
72 mm x 30 mtr
(3 Inch- 30 mtr/roll)

Nitrile Tape



Available Sizes :

50 mm x 3 mm = 10 mtr/ roll length
75 mm x 3 mm = 10 mtr/ roll length



High Performance HVAC Products

+91 6359000634

info@airx.co.in

www.airx.co.in

H 8/95 Anandnagar Apartment, B/h Akhbarnagar,
New-Wadaj, Ahmedabad 380013

AirX reserves the right to change the data and technical specifications without notice.